

# SC-Series

## Microprocessor Controls for Caravan Hot Water Modular Boilers



**Model SC-3**  
Three stage operation  
*Space heating only*

**Model SC-9**  
Nine stage operation  
*Space heating, domestic water or combination*

### New SC-Series controls for Caravan modular boilers optimize performance and save energy for small or large systems.

Maximize the energy-saving capabilities of your Slant/Fin Caravan modular boilers with new SC-Series microprocessor controls. The SC controls provide sophisticated computer logic to finely tune modular boiler operation to use the least amount of fuel and provide a more constant comfort level in the living areas of your building. Yet, they are easy to install and maintain.

The SC-9 and SC-3 controllers are designed for use in a broad range of modular boiler applications.

#### SC-Series controls -- the smart choice for superb heating performance

- Step-fire boiler modules using computer logic
- Maximize fuel savings
- Monitor outdoor conditions to determine boiler water temperature
- Integrate control of space heating and domestic hot water
- Interface with building automation system
- Designed specifically for Slant/Fin Caravan gas, oil-fired or dual-fuel modular boiler systems
- Lead/lag equalizes equipment wear
- Easy to program
- Detailed, user-friendly documentation and high caliber factory support

# SC-Series Microprocessor Controls for Caravan Hot Water Modular Boilers

**Computer logic matches output to need.  
Maintains better comfort.  
Optimizes efficiency.**

The Slant/Fin SC-Series controls continuously monitor outdoor temperature and system supply water temperature to determine how many modules must fire to maintain building comfort. The SC control analyzes the rate of change in the supply water temperature and anticipates future needs. This “smart” control maximizes fuel savings while optimizing building comfort.

**“Installer friendly”. You enter simple parameters; the controller makes the calculations.**

By simply entering job parameters, the controller automatically calculates setpoint, reset ratio and control band.

Programming options include outdoor reset, setpoint operation and warm weather shutdown.

**Select a firing sequence based on system performance or equipment wear factors.**

Select firing sequence mode based on job conditions. Modes include equal run time rotation, fixed lead and fixed last.

**Slant/Fin supports you with detailed documentation and technical services.**

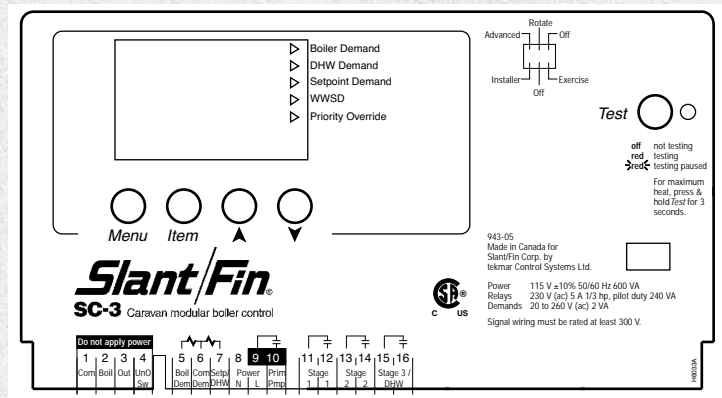
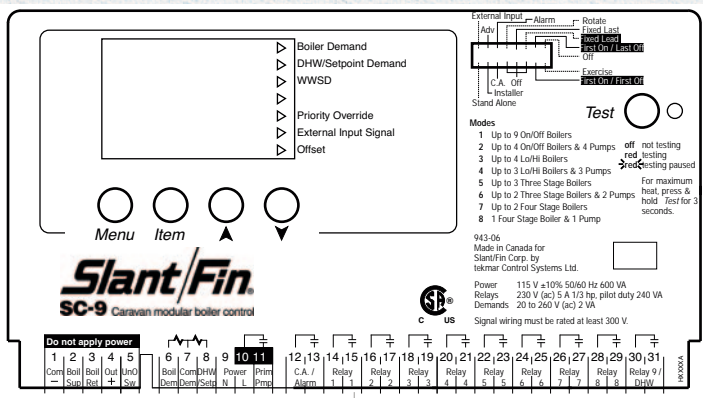
Local Slant/Fin representatives and distributors, plus the factory’s own technical services staff, are available to assist you with equipment selection and system specification, application guidance and troubleshooting advice.

## SC-Series controls are fully packaged and ready to install

Programmable to meet a wide range of modular boiler requirements. Factory default settings meet most common applications. All models include these features:

- Durable PVC enclosure ready for wall mounting
- Backlit LCD display for system set up and monitoring
- Outdoor and supply water temperature sensors included

- Test sequence to ensure proper component operation
- CSA C US certified
- Factory default settings, can be changed in the field.
  - a. Design outdoor air temperature of 10° F
  - b. Design indoor air temperature of 70° F
  - c. Design supply water temperature of 180° F



### SC-9

Controls up to 9 stages

- Space heating, volume water or combination control
- Outdoor reset or set point water temperature
- Outdoor temperature system start and shutdown
- Module rotation settings: fixed lead, fixed last off, first on/last off or first on/first off
- Combustion air damper/alarm contacts
- Off season pump exercising

### SC-3

Controls up to 3 stages

- Space heating only
- Outdoor reset or set point water temperature
- Outdoor temperature system start and shutdown
- Module rotation
- Off season pump exercising

