

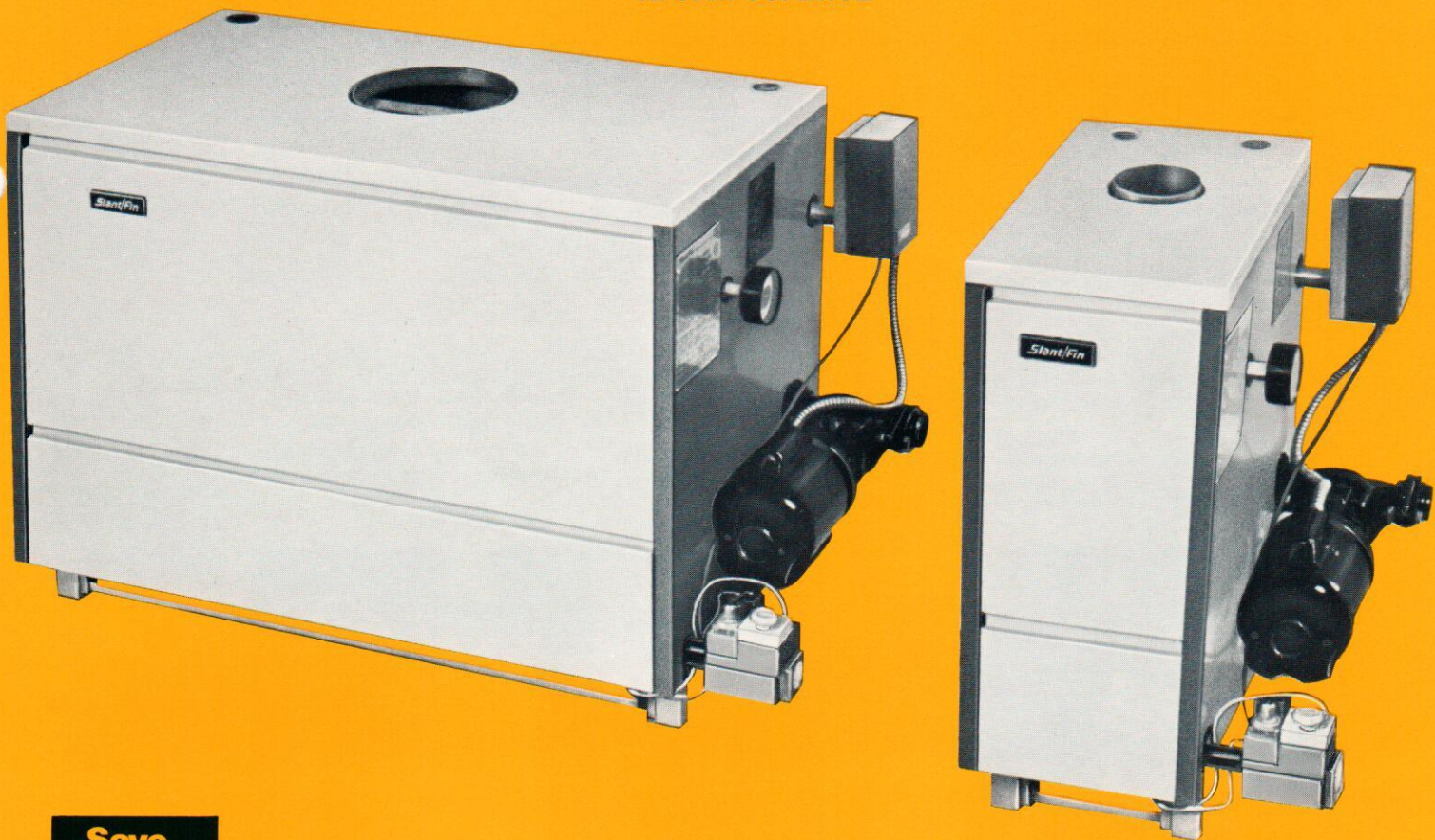
Slant/Fin

100 Series

Gas Fired Water Boilers

**Packaged residential
gas fired boiler designed
for heating comfort in
the modern home**

**Available in 9 Sizes:
60,000 to 300,000 Btu Input
A. G. A. Certified**



Before purchasing this appliance, read important energy cost and efficiency information available from your contractor.

Slant/Fin[®]

ratings

Boiler Model No.*	A.G.A. Input	Natural and Propane Gas Ratings			Minimum Chimney Size		
		D.O.E. Capacity Btuh	† Net I=B=R Water (Btu)	‡ Net Water (Sq. Ft.)	Round Inside Dia.	Ht.	Rectangular in. x in. x ft.
100-W-60	60,000	48,000	41,700	278	4"	15'	8 x 8 x 15'
100-W-90	90,000	72,000	62,600	417	4"	15'	8 x 8 x 15'
100-W-120	120,000	96,000	83,500	557	5"	15'	8 x 8 x 15'
100-W-150	150,000	119,000	103,500	690	5"	15'	8 x 8 x 15'
100-W-180	180,000	143,000	124,300	829	6"	15'	8 x 8 x 15'
100-W-210	210,000	167,000	145,200	968	6"	15'	8 x 8 x 15'
100-W-240	240,000	191,000	166,100	1,107	7"	15'	8 x 8 x 15'
100-W-270	270,000	215,000	187,000	1,247	7"	15'	8 x 8 x 15'
100-W-300	300,000	240,000**	208,700	1,391	8"	15'	8 x 8 x 15'

* Add suffix "S" for basic boiler and "P" for packaged boiler.

† Ratings shown are for Sea Level to 2,000 feet elevation. Net ratings shown include allowance for normal piping loss and pick-up load. For installations having unusual piping and pick-up requirements, additional allowances should be made before selecting the size of boiler required. Ratings are based on a piping and pick-up factor of 1.15.

‡ Based on heat emission rate of 150 BTU per sq. ft.

** A.G.A. gross output rating (Btuh).

Note: All boilers under 300,000 Btuh input are tested and rated for capacity under the U.S. Dept. of Energy (D.O.E.) Test Procedures for Boilers.

standard equipment

	Model "S" Basic Water Boiler	Model "P" Packaged Water Boiler		Model "S" Basic Water Boiler	Model "P" Packaged Water Boiler
Pre-assembled cast iron heat exchanger with built-in air eliminator	X	X	Altitude, pressure and temperature gauge	X	X
Base	X	X	Pressure relief valve (ASME)	X	X
Pre-assembled insulated extended jacket	X	X	Draft hood	X	X
Gas burners, gas orifices and manifold assembly	X	X	2-way combination control (hi-limit and circulator relay)		X
Combination gas valve including manual shut-off, pressure regulator, pilot adj. and 100% shut-off, automatic pilot-thermo-couple safety	X	X	Circulator: 1 1/4" (100-W-60 thru 100-W-210)		
			1 1/2" (100-W-240 thru 100-W-300)		X
			24 volt thermostat		X
			Drain cock	X	X
			Hi limit control	X	

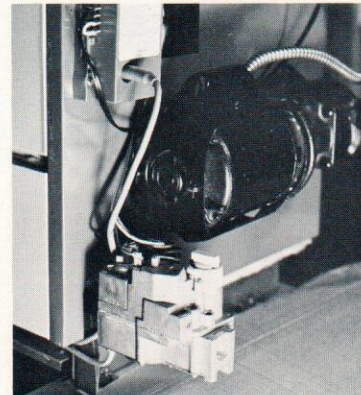
optional equipment

- Jacket extension
- Combustible floor kit.
- Self-generating controls.
- Auto-electronic pilot relite kit (24 volt only).
- Automatic vent damper.
- L8148 combination for intermittent circulator operation 24 volt or self-generating.
- Deluxe T87F thermostat (24 volt).
- TS87F thermostat (self-generating).
- Constant circulator operation (no relay).



Optional automatic, motorized stack damper

increases efficiency of boiler by reducing standby losses. Motor closes the chimney vent when the burner is off, fully opens it in anticipation of combustion. An interlock prevents burner operation unless the damper is in an open position. Damper is spring loaded and will open chimney vent on power failure.

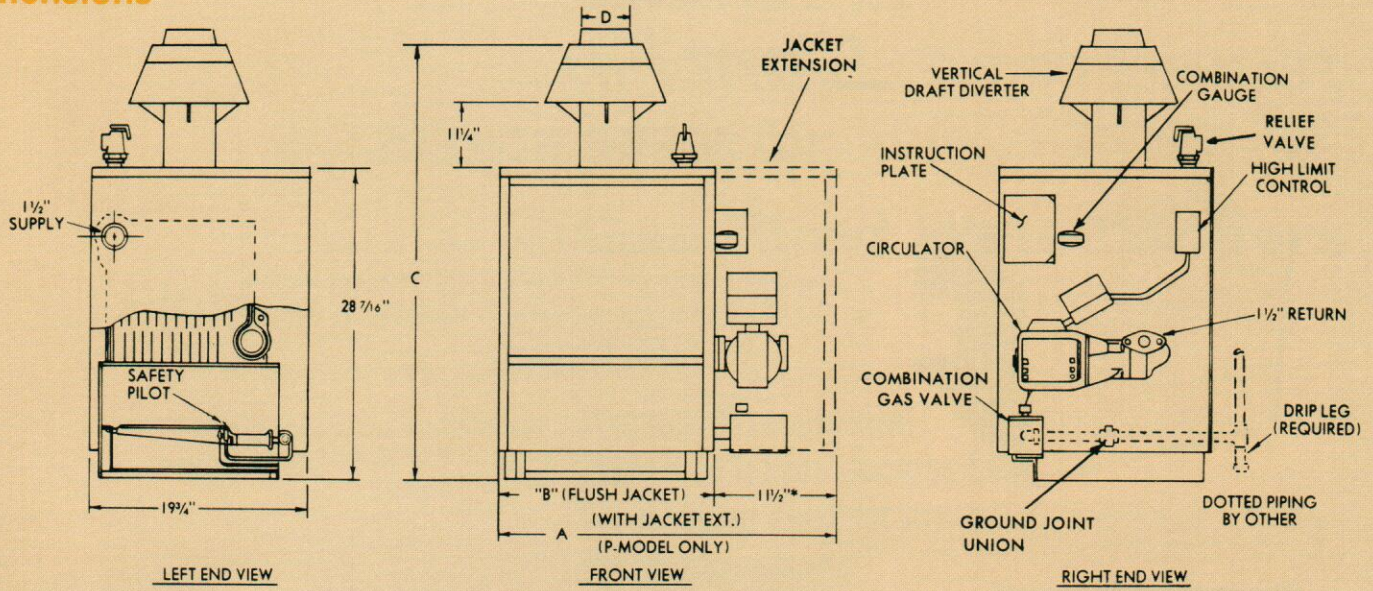


Optional intermittent pilot ignition system.

When the thermostat calls for heat, solid state igniter sparks to light pilot. Sensor reads pilot flame and opens main gas valve. Factory installed. Available only with 24 volt gas valve.

Polarized receptacle is standard equipment on boilers featuring optional intermittent pilot ignition system. Receptacle allows quick connection of wiring to optional Slant/Fin motorized stack damper.

dimensions

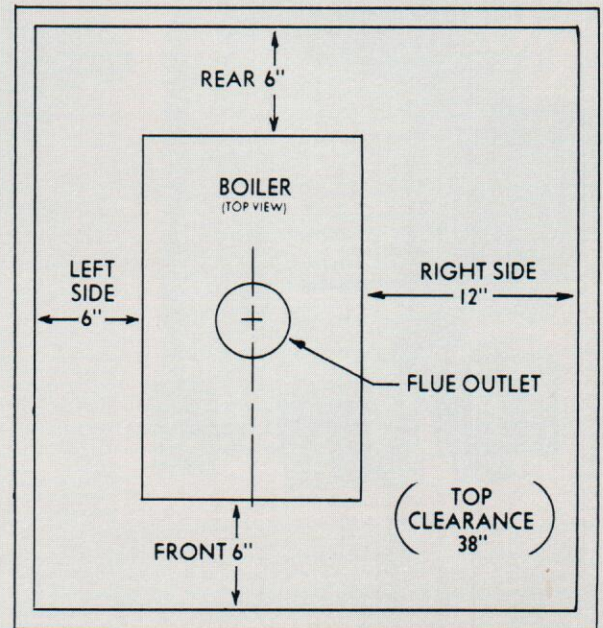


Boiler Model No.	Tappings—Number and Size				Dimensions—Inches				Outside Boiler Crate Dimensions in Inches		
	Water		Gas Connection		A	B	C	D	Length	Width	Ht.
100-W-60	1—1½"	1—1½"	1/2"	1/2"	22 ⁵ / ₈	11 ¹ / ₈	45 ¹ / ₁₆	4	27 ⁷ / ₈	24 ¹ / ₄	35
100-W-90	1—1½"	1—1½"	1/2"	1/2"	25 ⁵ / ₈	14 ¹ / ₈	45 ¹ / ₁₆	4	27 ⁷ / ₈	24 ¹ / ₄	35
100-W-120	1—1½"	1—1½"	1/2"	1/2"	28 ⁵ / ₈	17 ¹ / ₈	46 ⁵ / ₃₂	5	30 ⁷ / ₈	24 ¹ / ₄	35
100-W-150	1—1½"	1—1½"	1/2"	1/2"	31 ⁵ / ₈	20 ¹ / ₈	47 ¹ / ₂	5	33 ⁷ / ₈	24 ¹ / ₄	35
100-W-180	1—1½"	1—1½"	1/2"	1/2"	34 ⁵ / ₈	23 ¹ / ₈	48 ¹ / ₂	6	36 ⁷ / ₈	24 ¹ / ₄	35
100-W-210	1—1½"	1—1½"	3/4"	1/2"	37 ⁵ / ₈	26 ¹ / ₈	49 ²⁵ / ₃₂	6	42 ¹ / ₈	24 ¹ / ₄	35
100-W-240	1—1½"	1—1½"	3/4"	1/2"	40 ⁵ / ₈	29 ¹ / ₈	49 ²⁵ / ₃₂	7	42 ¹ / ₈	24 ¹ / ₄	35
100-W-270	1—1½"	1—1½"	3/4"	1/2"	43 ⁵ / ₈	32 ¹ / ₈	49 ²⁵ / ₃₂	7	48 ¹ / ₈	24 ¹ / ₄	35
100-W-300	1—1½"	1—1½"	3/4"	1/2"	46 ⁵ / ₈	35 ¹ / ₈	49 ²⁵ / ₃₂	8	48 ¹ / ₈	24 ¹ / ₄	35

Height dimension increases by 1¹/₆" when combustible floor kit is used. Jacket Extension is available on P Model only.

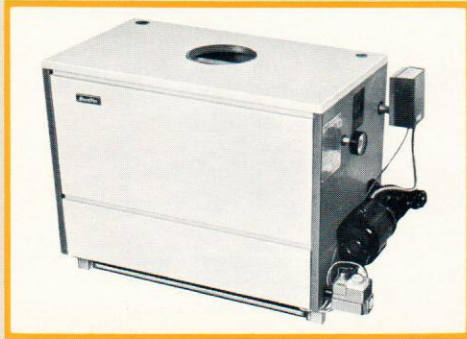
reduced clearance dimensions

(For closet installations)

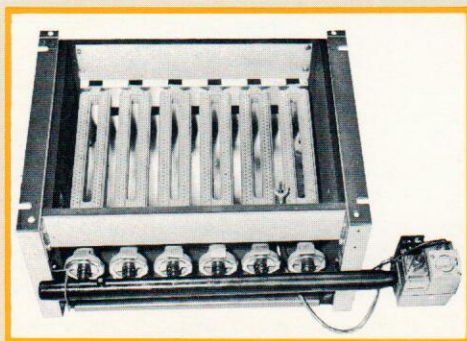


FEATURES OF THE *Slant/Fin*

100 SERIES BOILERS

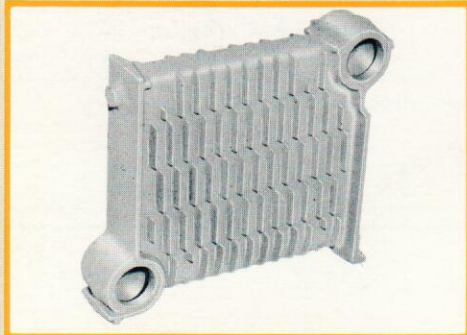


- Compact design — only 28 $\frac{5}{16}$ " high x 19 $\frac{1}{4}$ " deep.
- Ease of burner servicing with front access door opening.
- All electrical controls and wiring are located on right end of boiler for ease in servicing.
- Any electrical control can be changed without draining the heating system.
- Jacket is two-tone green baked enamel with heavy glass wool insulation permanently bonded to inside of boiler jacket.



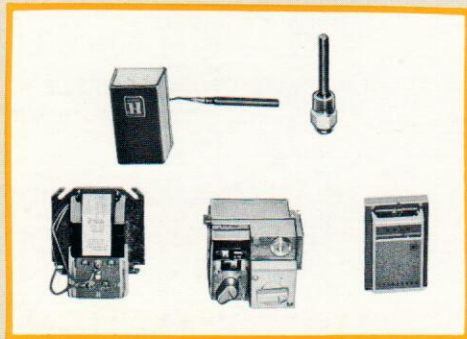
base assembly

- One piece cast iron burner and venturi prevents gas leakage thru loose joints.
- Positive-positioning T-slot, locks burners in position directly under the boiler flue passes.
- Heavy steel base insulated with mono-block, maintaining heat in combustion area.
- Combination gas valve for convenience, 100% pilot shut off for safety.
- One piece gas manifold with gas pressure testing port.



left end section

- Cast iron construction for durability and long life.
- Vertical flue passes with raised heat absorption fins, assures efficient heat extraction.
- Built-in air collection chamber for air elimination.



standard controls

- Combination gas valve.
- Relay for intermittent circulator operation. ("P" boiler only)
- High limit control with separable well, permitting control replacement without draining system.
- 24 volt thermostat.