

Slant/Fin®



This parts list must be left with owner, hung on or adjacent to the boiler. Owner should retain parts list for future reference.

LYNX Modulating Condensing Gas Boiler

Boiler Replacement Parts List

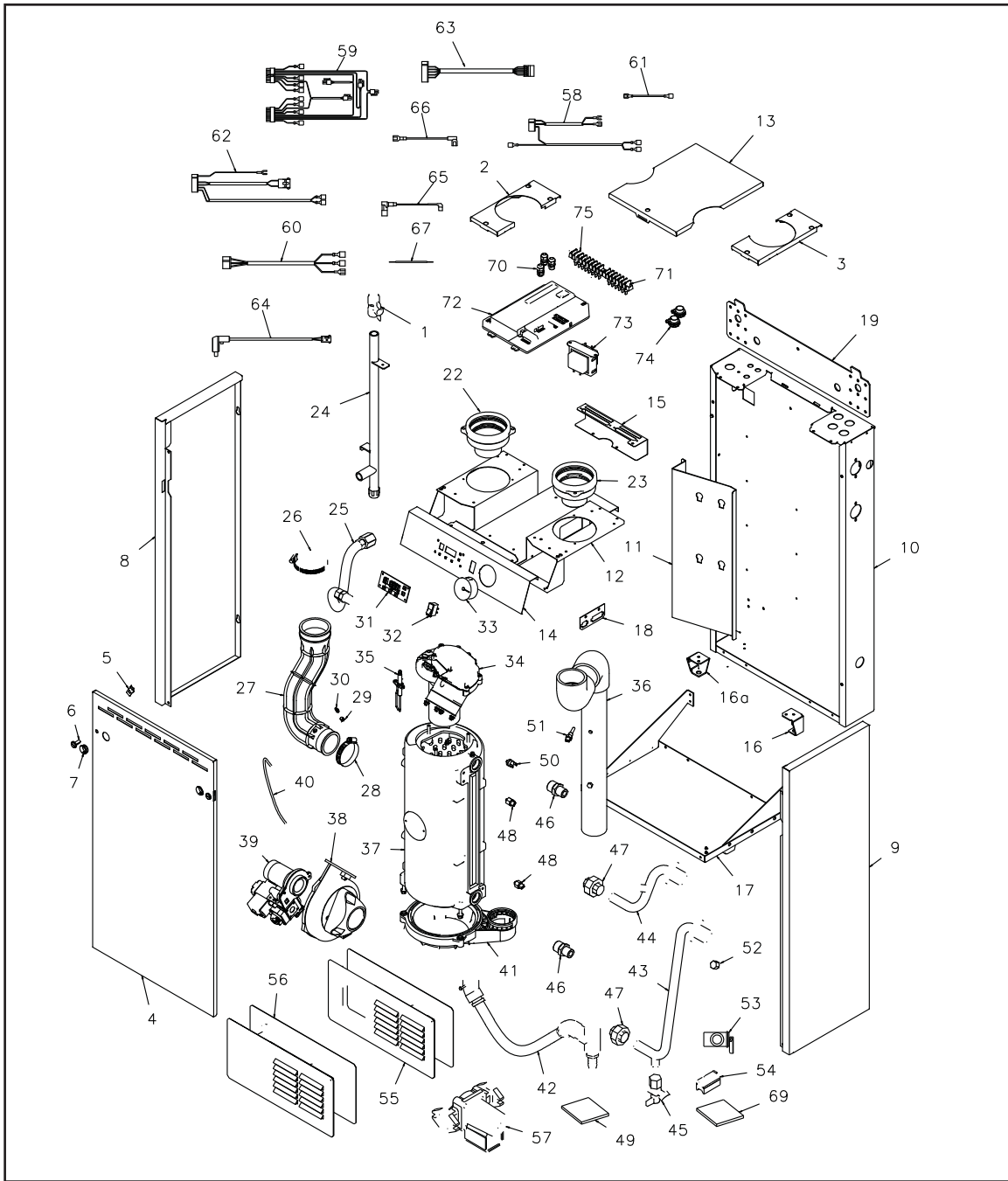
Item No.	Description	LX-85A
1	GAS SHUT OFF VALVE	86 3803 000
2	JACKET - LEFT TOP COVER	84 1020 000
3	JACKET - RIGHT TOP COVER	84 1019 000
4	JACKET FRONT ASSEMBLY	84 0109 000
5	1/4 TURN PAWL LATCH	00 5075 000
6	1/4 LATCH PAWL LATCH SLOTTED STUD	00 5074 000
7	SNAP BUSHING	50 0385 000
8	JACKET LEFT SIDE PANEL	84 1006 000
9	JACKET RIGHTSIDE PANEL	84 1007 000
10	REAR JACKET SUBASSEMBLY	84 0108 000
11	BRACKET FOR HEATEXCHANGER	84 1002 000
12	MAIN FRAM ASSEMBLY	84 0113 000
13	TOP COVER	84 1004 000
14	FRONT PANEL ASSEMBLY	84 0117 000
15	TERMINAL BRACKET	84 1013 000
16	LEG RIGHT	86 1126 000
16a	LEG LEFT	86 1127 000
17	BOTTOM SUB-ASSEMBLY	84 0107 000
18	CONNECTOR BRACKET	86 1212 000
19	WALL BRACKET	84 1128 000
22	AIR INTAKE COLLAR ASSY	84 0124 000
23	COLLAR ASSY	84 0120 000
24	GAS PIPE WELD SUB- ASSEMBLY	84 0114 000
25	FLEXIBLE 1/2 GAS HOSE	84 3331 000
26	WORM DRIVE CLAMPS 3 1/2" DIA	86 3205 000
27	AIR INTAKE HOSE	84 0122 000
28	WORM DRIVE CLAMPS 2 1/2" DIA	86 3211 000
29	THREADED INSERT 10-32	84 3011 000
30	BRASS FITTING	66 0596 000
31	LED DISPLAY - ASSEMBLY	83 2606 000
32	ON/OFF SWITCH	86 2601 000
33	PRESSURE GAUGE	86 3611 000
34	BURNER ASSEMBLY	84 0240 000
35	SPARK IGNITOR	84 3218 000
36	FLUE PIPE ASSEMBLY	84 0119 000
37	HEATEXCHANGER	84 3430 000
38	BLOWER	86 3215 000
39	GAS VALVE AND VETURI ASSEMBLY	84 0212 000
40	TUBING	66 0598 009
41	FLUE COLLECTOR ASSEMBLY	84 3414 000
42	CONDENSATION DRAIN PIPE - ASSEMBLY	84 0504 000
43	RETURN PIPE- WELDED ASSEMBLY	84 3425 000
44	SUPPLY PIPE - WELDED ASSEMBLY	84 3428 000
45	DRAIN VALVE	84 3424 000
46	FITTING	84 3005 000
47	UNION 1/2" NPT	86 3440 000
48	WATER SENSOR	84 2410 000
49	PROPANE GAS COVERSON KIT	84 0911 000
50	WATER HIGH LIMIT	84 0440 000
51	FLUE SENSOR	86 3501 000
52	CHECK VALVE	86 3402 000
53	SAFETY RELIEF VALVE	65 0550 000
54	OUTDOOR SENSOR KIT (12 kOhm)	86 3805 000
55	VENT/AIR INTAKE TERMINATION KIT (FOR PVC VENTING)	84 0808 000
56	VENT/AIR INTAKE TERMINATION HORIZ. MOUNTING ASSY (FOR STAINLESS STEEL VENTING)	84 0813 000
57	CIRCULATOR TACO	86 3804 000
58	J2 CONNECTOR HARNESS	84 2117 000
59	J5 CONNECTOR HARNESS	84 2115 000
60	J6 CONNECTOR HARNESS	83 2105 000
61	CIRCULATOR NEUTRAL JUMPER	86 2110 000
62	J13 CONNECTOR HARNESS (FOR GAS VALVE TRANSFORMER AND GROUND, WATER HIGH LIMIT CONNECTION)	84 2118 000
63	BLOWER CONNECTOR HARNESS	84 2119 000
64	GAS VALVE CABLE	86 2113 000
65	SPARK CABLE	86 2101 000
66	GROUND WIRE	84 2116 000
67	LOW WATER CUTOFF JUMPER	86 2111 000
69	NATURAL GAS COVERSON KIT	84 0912 000
70	HEYCO CORDGRIP RLTCG7	86 3602 000
71	TERMINAL BLOCK-6	86 2602 000
72	CONTROL BOARD	84 2609 000
73	TRANSFORMER 24V, HONEYWELL 140B1297	66 0528 000
74	3/8" STRAIGHT BX CONNECTOR	40 0309 000
75	TERMINAL BLOCK-8	86 2603 000

When ordering replacement parts: specify the model number, serial number and gas by name (natural or propane).
For replacement parts, heating contractors should contact their Slant/Fin boiler distributor.

PUBLICATION NO. LXA-10PL

Printed in U.S.A. 1108

Part No. 84 5758 000



OPTIONAL VENT SYSTEM PARTS

3" Diameter Heat-Fab Saf-T EZ Seal venting system (AL29-4C stainless steel)

Description	Part No.	Heat-Fab EZ Seal Part No.
6" long vent pipe	45 5020 000	9301
12" long vent pipe	45 5021 000	9302
18" long vent pipe	45 5022 000	9304
24" long vent pipe	45 5023 000	9305
37 1/2" long vent pipe	45 5024 000	9307
Elbow termination with screen	44 0678 000	7314TERM
Support, 6" clearance	44 0679 000	7323GCC
Support, 2" clearance	44 0692 000	7323GC2
Support clamp	44 0680 000	4327SS
45° elbow	45 5017 000	9311

Description	Part No.	Heat-Fab EZ Seal Part No.
90° elbow, standard radius	45 5019 000	9314LR
TEE termination with screen	44 0683 000	7390TEE
Stainless steel pipe adaptor	84 0907 000	
Vent/air intake Termination for S.S. Venting system	84 0804 000	
Slip joint connector (6"-19")	45 5025 000	9324
Fire stop	44 0685 000	5318CI
90° elbow, tight radius	45 5018 000	9314
Wall thimble * (5"-8" Wall)	44 0695 000	
Straight termination with screen	66 0548 000	7392GC

©Slant/Fin Corp. 2008.



SLANT/FIN CORPORATION, Greenvale, N.Y. 11548 • Phone: (516) 484-2600
 FAX: (516) 484-5921 • Canada: Slant/Fin LTD/LTEE, Mississauga, Ontario

www.slantfin.com